



Product Safety

Your Key to Global Market Access

www.tuv.com



TÜVRheinland[®]
Precisely Right.

Product Safety

Compliance Testing & Certification Services

In today's challenging world, the choice of a regulatory testing and compliance service partner can make the difference between success and failure. The global network of technical experts at TÜVRheinland® will put their local market knowledge to work for you, giving you streamlined solutions, faster market entry, and an internationally respected mark to help you maximize your market opportunities when you get there. You can't afford last minute regulatory surprises. TÜVRheinland® — with its long-standing history of superior engineering expertise and vast portfolio of solutions — will help you meet critical global rollout schedules, saving time and money.



TÜVRheinland® GS Mark

The TÜVRheinland® GS Mark has its roots in the German equipment safety law. The literal translation of Geprüfte Sicherheit (GS) is "approved safety." This voluntary mark signifies a product's electrical safety aspects have been third-party evaluated, tested and certified that continuous production control is maintained.

Conversely, CE Marking indicates a self-declaration and does not prove compliance. For most products sold in the EU, the use of CE Marking and a Declaration of Conformity are mandatory, but provide no marketing value.

With the exception of some high risk products, most products can be self-declared by the manufacturer to meet the Essential Requirements for EU access, but the marking is not an approval, certification or quality mark; nor is it a marketing tool.

When manufacturers fail to conduct voluntary safety and quality testing, toasters catch fire, drills overheat, and irons burn out, or worse. The TÜVRheinland®

GS Mark goes far beyond the CE Marking, providing desirable third-party certification and a distinctly competitive marketing advantage.

Market Advantages to the TÜVRheinland® GS Mark

In an independent end-consumer survey, 88% of respondents wanted the advertising statements of a manufacturer to be checked by an independent third-party. How do you do this? With the internationally recognized TÜVRheinland® GS Mark.

The European Free Trade Association (EFTA) recently published a study on Certification Marks in Europe. This study showed the strength and need for the GS Mark, which is evidenced by the support of the German public authorities. For instance, the German Federal Ministry of Labor and Social Affairs owns the GS Mark, therefore making the GS mark a "must have" for technical equipment used in the workplace.

CE Marking — Low-Voltage Directive (LVD) 2006/95/EEC — Electrical Safety

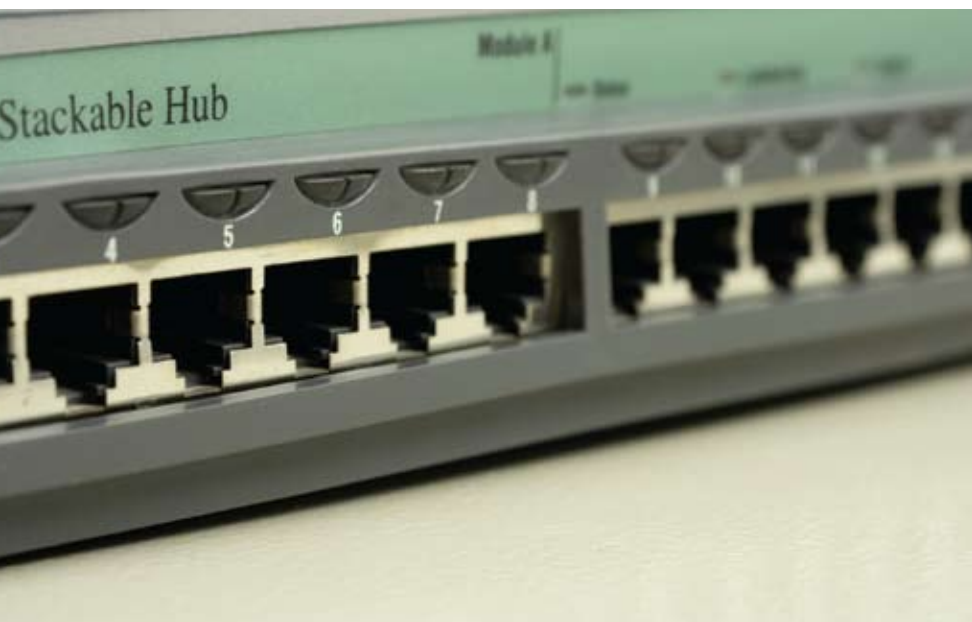
The LVD is one of the oldest European single-market directives relating to electrical equipment with ratings 50-1,000 VAC or 75-1,500 VDC Input. Products may include computers, information technology equipment, consumer products, household appliances, laboratory equipment, test and measurement equipment, and power supplies. Certain types of components must comply with the applicable directives, but in many cases should not have CE Marking. TÜVRheinland® offers a certificate of conformity based on the LVD after successful review of your technical data.

eTUVus Mark — U.S. and Canadian Product Approvals.

With constrained budgets and tight development timelines, your Nationally Recognized Testing Laboratory (NRTL) choice is critical. TÜVRheinland® is becoming the leading North American certification organization because of its client-oriented way of doing business. The TÜVRheinland® work-flow process reduces test-cycle time and lowers overall costs, and new accreditation capabilities are regularly added.

The TÜVRheinland® NRTL mark is widely accepted as the UL/CSA equivalent by retailers, and many manufacturers are turning to TÜVRheinland® for the cost savings, worldwide acceptance and responsive customer service.

Today, more than ever, you need to demonstrate how regulatory compliance



TÜVRheinland® is one of the leading and most competent providers of product evaluations and certifications for the worldwide marketplace. Offering global compliance solutions such as EMC, cTUVus (NRTL) and International Approvals for any country of destination, TÜVRheinland's global network helps customers gain global access more effectively and efficiently.

adds value to your operations. TÜVRheinland® is your best choice to make this happen.

Timely Global Compliance

Key Points of cTUVus Certification:

- The cTUVus mark is accredited by OSHA (NRTL) for the U.S. and SCC for Canada.
- The cTUVus mark is recognized as equivalent to the UL and CSA marks by city, county and state/provincial regulators throughout the U.S. and Canada.
- Safety testing conducted to applicable U.S. and Canadian standards and in most cases can be combined with testing for other countries.

Cost and Time Saving Advantages of the cTUVus Mark Include:

- One-stop testing and certification for all of your worldwide certification needs — one test can lead to worldwide compliance.
- Most organizations charge annual fees for their certification/file maintenance. Consolidating your certifications with TÜVRheinland® offers substantial cost savings over the life of a product.
- Existing UL and CSA marks may be transferred to cTUVus with ease.

TÜVRheinland® Bauart Mark

The TÜVRheinland® Bauart mark shows that the product has been inspected by TÜVRheinland® and has been found compliant with the relevant safety standards. Affixing this mark increases consumer confidence of the product in the marketplace. Moreover, if the manufacturers aim to gain the GS mark for a final product and the individual

components within the product have already received the TÜVRheinland® Bauart mark approval, the lead time and costs involved with the GS mark approval is reduced.

The TÜVRheinland® Bauart mark is available for final products as well as individual components. Factories that produce TÜVRheinland® Bauart mark-certified products, undergo periodical inspections to assure the manufacturer is able to maintain the specifications of the certified product in its production.

CB Scheme — A One-Stop Passport to the International Marketplace

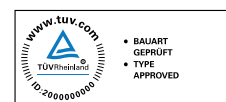
The aim of the CB Scheme is to provide manufacturers seeking worldwide third-party certification marks the most economic and cost-effective processes in the shortest time frames. The CB Scheme is based on the principle of

mutual recognition of members' test certificates for the purpose of issuing third-party certification marks at a national level for the safety of electrical and electronic components, equipment and products. TÜVRheinland® offers a CB test report and certificate recognized by more than 43 countries, saving time and reducing testing costs. Before exporting products, manufacturers should contact TÜVRheinland® and inquire about the CB Scheme.

TUVdotCOM

TUVdotCOM is a free global certification database that provides a preliminary view of thousands of active safety and quality certification that are searchable all day, every day, via the internet. To learn more take a live tour by selecting "TUVdotCOM" at www.tuv.com and enter ID 0000000888 in the search field.

Examples of Product Safety Certification Marks (not all inclusive)



With Over 360 Locations in 62 Countries

We can help get your products to market quicker



TÜVRheinland® Precisely Right.

North American Headquarters
12 Commerce Road
Newtown, CT 06470

1-TUV-RHEINLAND

(1-888-743-4652)
Int'l 203-426-0888

info@tuv.com
www.tuv.com

TÜVRheinland® is the world leader in independent testing and assessment services. The \$1.5 billion corporation is comprised of an international network of 12,500 employees at over 360 locations in 62 countries and serves most industry sectors and markets worldwide. With North American headquarters in Newtown, Conn., TÜVRheinland® has additional offices throughout North America.

United States

Aliquippa, PA
Austin, TX
Birmingham, AL
Boston, MA
Caledonia, MI
Chicago, IL
Detroit, MI
Flint, MI
Houston, TX
Orlando, FL
Portland, OR
Raleigh, NC
Rochester, NY
San Diego, CA
San Francisco, CA
Tempe, AZ

Canada

Toronto

Mexico

Guadalajara
Mexico City
Monterrey